



Enabling Clinical Design and Innovation

Anne Horgan

General Manager

Clinical Design and Innovation, HSE





Irish Healthcare - Headline Challenges

Increasing, ageing, diverse population; emerging new marginalised groups



Population profiles across all ages - insight to inform planning of regionalised services



Service access-demand; wait times; medicines shortages; rising costs constraining ability to fund



Behavioural factors; socio-economic deprivation, inequity, self management



Bridging workforce gap – international demand; new evolving roles – shift left



Increasing non-communicable [chronic] disease burden and antimicrobial resistance



Clinical data/document standards; clinical systems and solutions

Patient empowerment - desire for increased ownership



Innovative approaches - precision medicine [genetics, environment, lifestyles]

Using digitisation, data, AI to improve outcomes





Clinical Design – proactive versus reactive

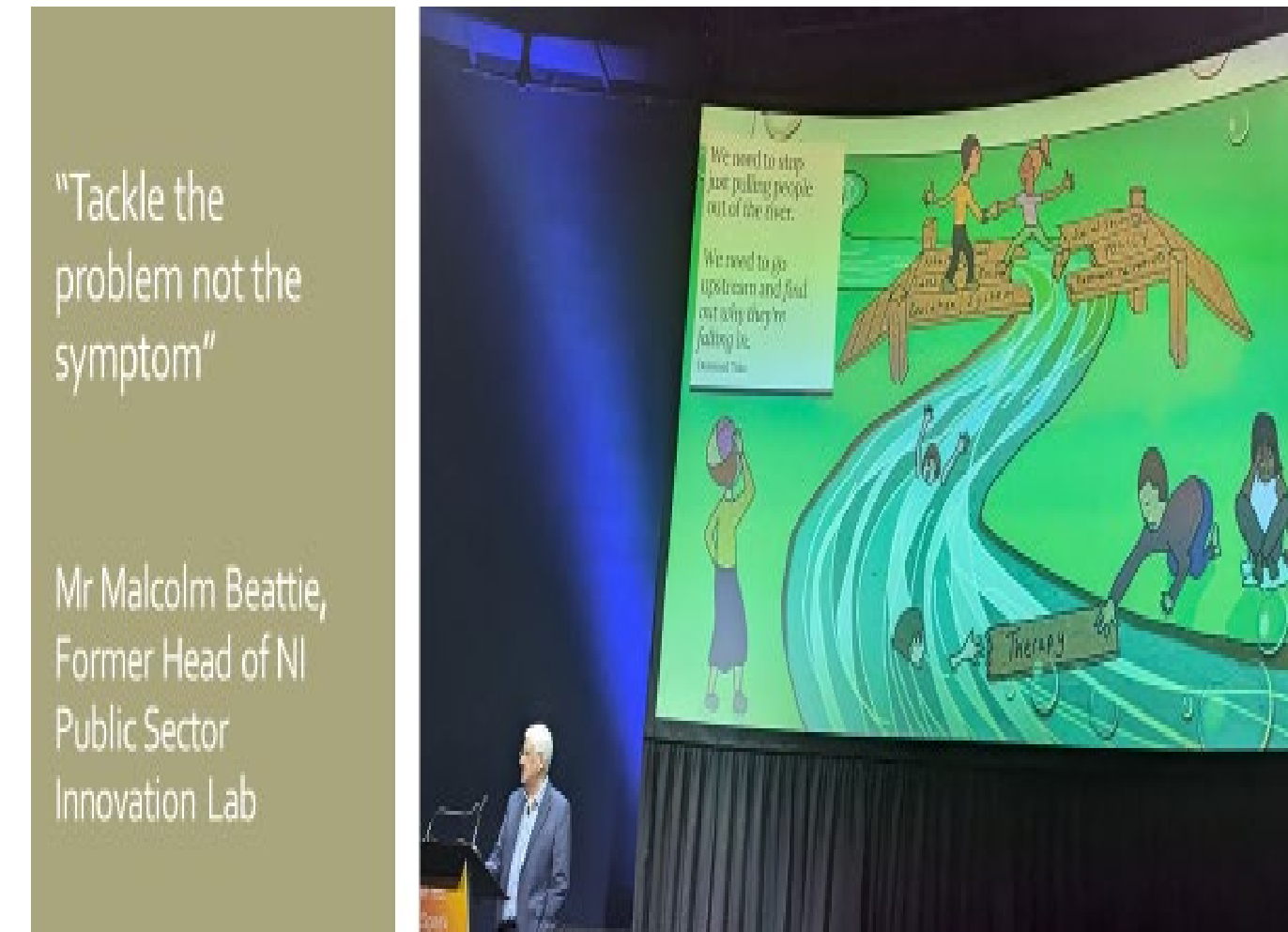
Where is Healthcare System now, from design perspective?

Risk getting stuck in cycle of dealing with emergencies

Downstream (reactive) mode rather than going Upstream to find root cause and fix what caused problems to occur (system thinking)

WHAT, WHY, WHEN, WHERE, HOW

Articulate problems in new way - create good health experiences





*Execute service-process-
change improvements*

Foundations:

*innovative
concept to
clinical design*

*Engage &
Support*

*Programmatic
Approach*

*Execute -
proof of
concept;
test of
change*

*Realise &
Celebrate
Results*

*Situational
Assessment*

*Shared
Learning &
Collaboration*

*Monitor,
Evaluate, Iterate
& Scale Up*

*Collaborate, share,
expand*



Clinical Design and Innovation 2023 - A year in review

Clinical Design and Innovation 2023 – A year in review

Examples of our collaborative work to change and improve services



Improved access to care

A new child and adolescent eating disorder service was opened for Cork and Kerry.

"Work-Able Solutions" initiative began helping people with chronic pain stay employed or return to work.

Designed clinical services

- Diabetes in pregnancy
- Cardiac rehabilitation
- People with mental disorder and substance use disorder

available at

hse.ie/eng/about/who/cspd/ncps/



Ensured the voice of service users is at the centre of everything we do

An older person's reference group was established to share what matters most to them.

Patient co-design of clinical services.



Supported people to live well in their communities

In 2023:

GPs managed ~ 550,000 patients with chronic diseases

Community Specialist Teams saw ~ 100,000 older people





Need to meet evolving challenges

To move to holistic system, design-driven and participatory approach, with focus on jointly optimising

- system performance (productivity, efficiency, effectiveness, patient safety)
- AND**
- wellbeing (health, safety, experience)

Complex Challenges require an **Evidence-Based, Participatory, Design-led Approach**

- *incorporate research and data insights, based on best available evidence (Ulrich et al., 2008)**
- *aligns with shift towards patient-centred care models (Robert, 2015)**
- *ensures practical, effective, accessible and sustainable models of care, in real-world settings (Bate & Robert, 2006)**

*Bate, P., & Robert, G. (2006). *Experience-based design: from redesigning the system around the patient to co-designing services with the patient. Quality and Safety in Health Care, 15(5), 307-310.*

Robert, G. (2015). *Participatory design in healthcare: A literature review. Health Expectations, 18(5), 537-550.*

Ulrich, R., Zimring, C., Zhu, X., DuBose, J., Seo, H. B., Choi, Y. S., Quan, X., & Joseph, A. (2008). *A review of the research literature on evidence-based healthcare design. HERD: Health*



Ensure Clinical Design Effectiveness

Situational analysis

Methodology

- Document review
- Interviews
- Survey
- Literature review
- Co-design workshop

Outputs identified methodologies/training curriculum to support Clinical Design Teams, based on expressed needs

- SI and QI framework for planning and executing work
- Consistent approach to design thinking planning and implementation support
- Build MDT clinical design teams for the future, with right capacity and capability



We asked:

To what extent are data sources used as inputs into design process?

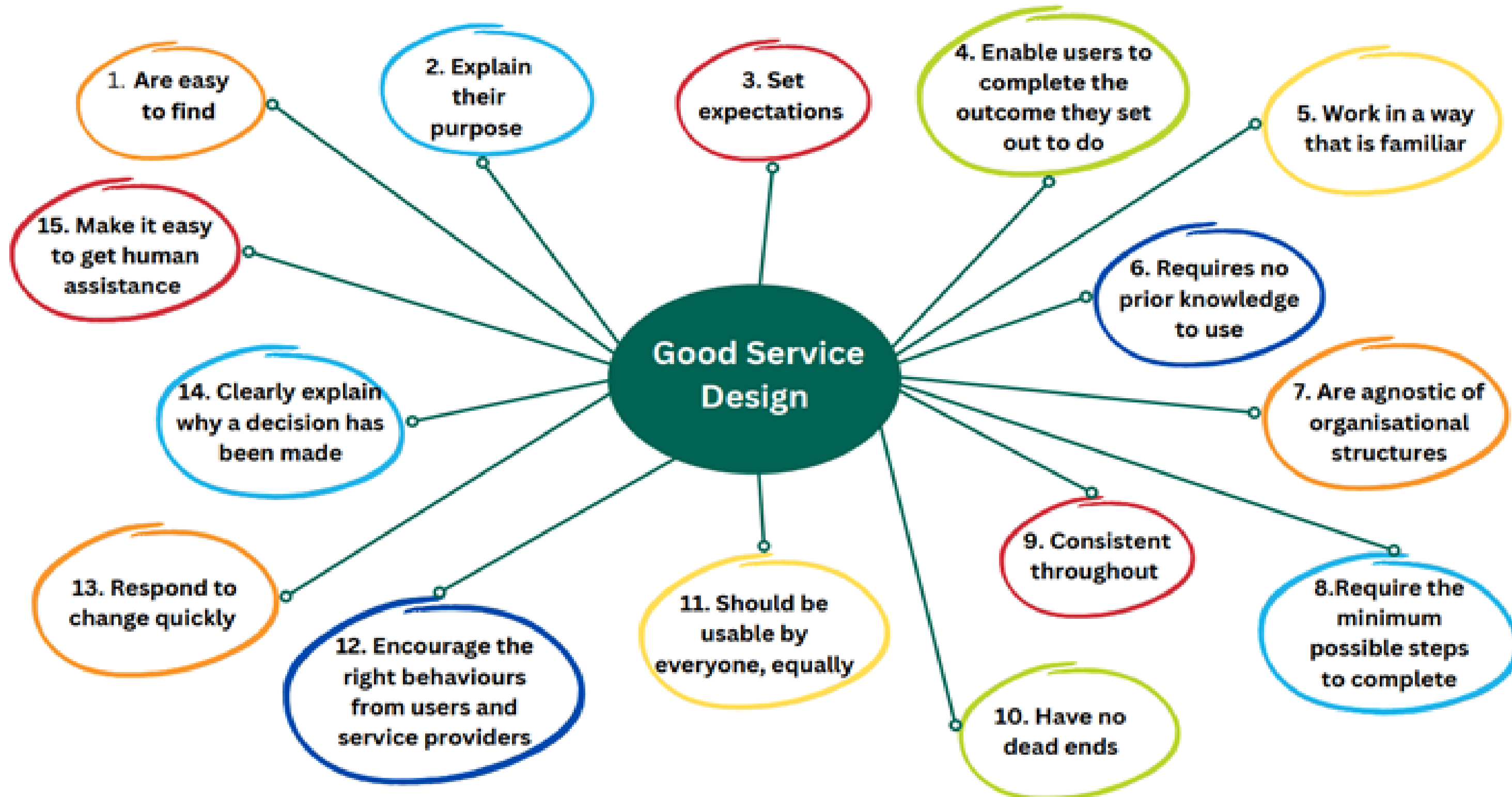
- Frontline Staff Engagement
- Patient/Public Engagement
- Clinical/Healthcare Audits
- Patient Safety Data
- Patient Outcome Data
- Clinical Effectiveness Data
- System Efficiency Data
- Clinical Literature Search
- Healthcare Design Literature Search
- Population Health Data
- National Agreed Policies/ Strategies

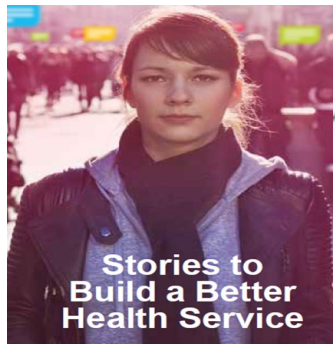
To what extent are design concepts-frameworks-methodologies used?

- Design Thinking / Double Diamond
- Co-Design / Participatory Design
- Sociotechnical Systems
- The CUBE
- User-Centred Design
- Lean Six Sigma
- As-Is & To-Be Process Modelling



Principles of Good Service Design (Downe, 2020)*





Patient Co-Participation

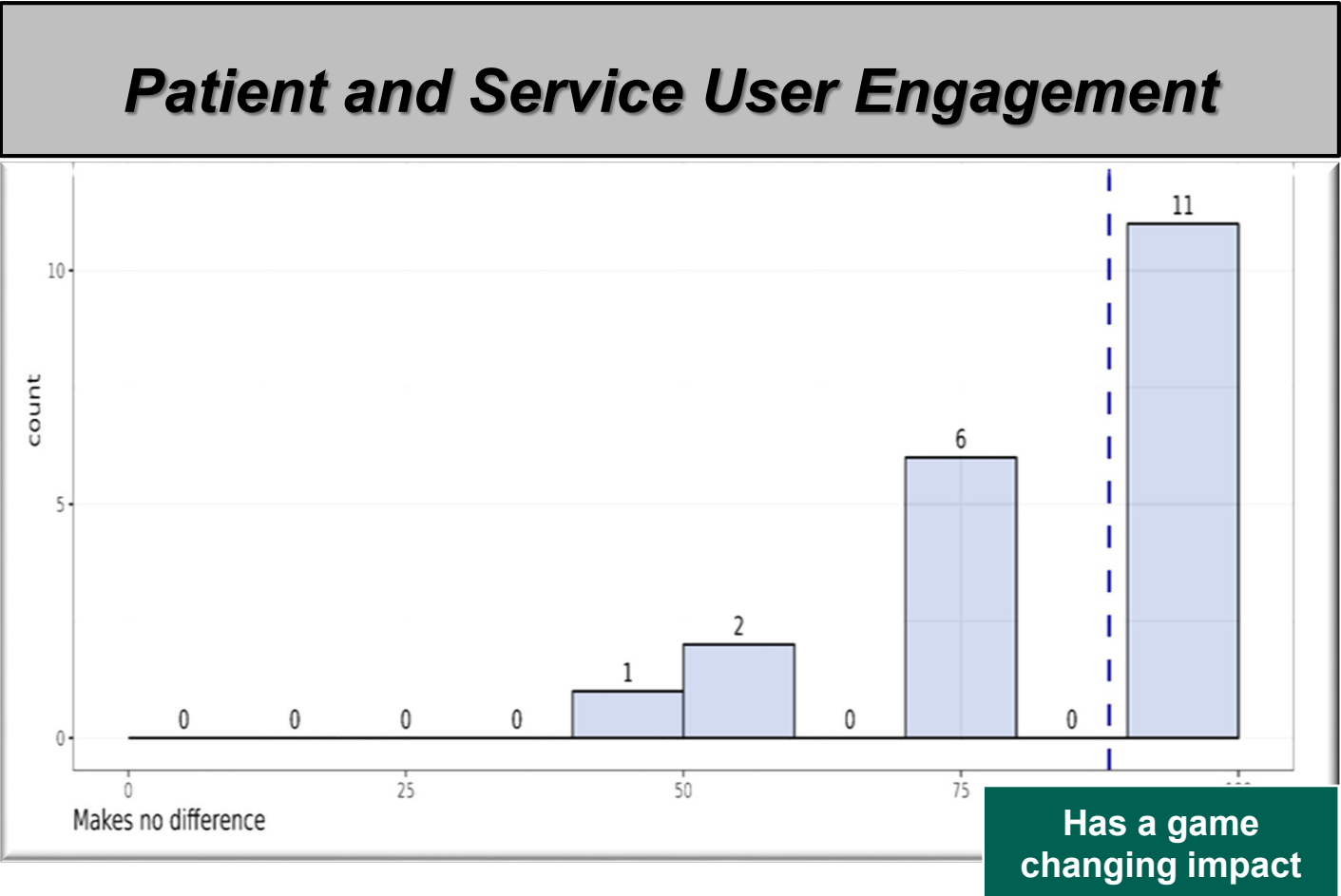
Fundamental cornerstone of healthcare

While clinical effectiveness and safety important, *experience of care* matters **just as much**

Watch a video about Your Voice Matters



<https://www.hse.ie/eng/about/who/cspd/patient-narrative/participant-information/>





Clinical Design and Innovation – Future Model

Identify, design innovative solutions for optimum care delivery

Design and pilot value-conscious models of care that improve outcomes

Standardise quality care informed by patient-centric data

Identify and deliver value - improve efficiency, effectiveness, sustainable patient care

→ Value-based

→ Evidence-informed

→ Data-driven

→ Person-centred; population-based

→ Find, design, test and support implementation

→ Demonstrate integration across service domains



Our journey ahead

Path Ahead



Support Health Region operational entities via national clinical designs



**Patient and Service User Partnership Council
Better for patients, better for services**



Directory of 'pipeline innovative designs' – scan potential for testing, evaluating and spread



Innovate with empathy - take on pressing challenges, focus on unmet need via population based planning



**Digital and data enablement; health information dashboards
HSPA Outcomes Framework**



Reflections: incremental steps in right direction





Thank you