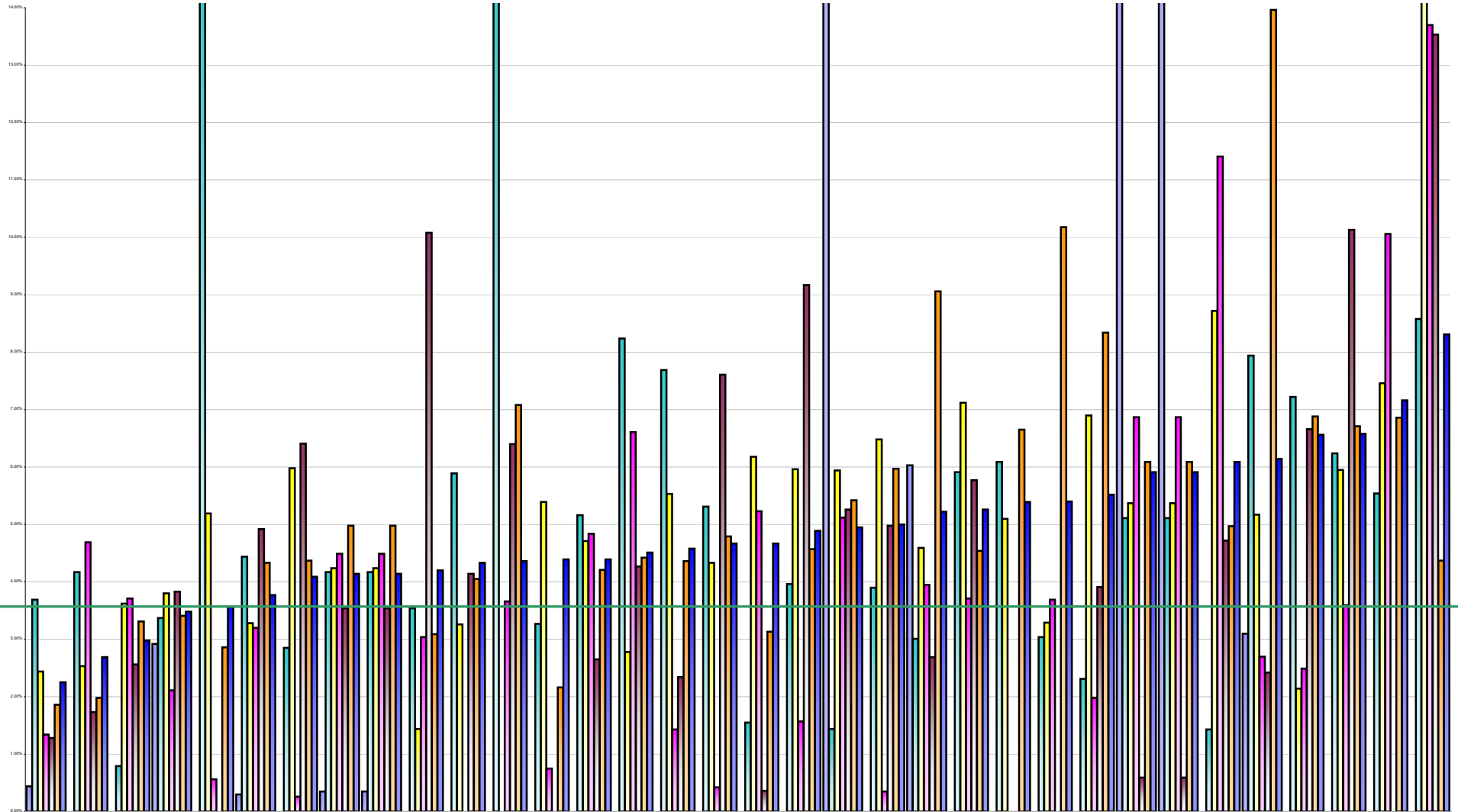


Voluntary Agency Absenteeism February 2014 Per Grade Category

Overall Target 3.5%



	St. John of God, DML	St. John of God, Kerry	Surbeam House Services	St. Michael's House	Bros. of Charity, Clare	National Rehabilitation Hospital	Daughters of Charity, Dublin	Our Lady's Hospice & Care	Our Lady's Hospice & Care	Leopardstown Park Hospital	Royal Hospital, Donnybrook	Dublin Dental Hospital	Children's Sunshine Home	Cope Foundation	Muiriosa Foundation, Longford/W	Daughters of Charity, Roscrea	Bros. of Charity, Galway	Central Remedial Clinic	St. John of God, Drumcar	Incorporated Orthopaedic Hospital	Carriglea Cairde Services	Cheeverstown House	Peamount Hospital (Newcastle)	Bros. of Charity, Limerick	Muiriosa Foundation, Laois/Offaly	Muiriosa Foundation, South	Bros. of Charity, Southern	Bros. of Charity, Waterford	Bros. of Charity, Roscommon	Cork Dental Hospital	Stewart's Hospital, Palmerstown	Daughters of Charity, Limerick	Kare, Newbridge, Co Kildare	St. Patrick's, Kilkenny
■ % Absent Medical Dental	0.44%	0.00%	0.00%	2.92%	0.00%	0.30%	0.00%	0.35%	0.35%	0.00%	0.00%	0.00%	0.00%	0.00%	0.00%	0.00%	0.00%	0.00%	0.00%	84.57%	0.00%	6.03%	0.00%	0.00%	0.00%	0.00%	35.48%	35.48%	0.00%	3.10%	0.00%	0.00%	0.00%	0.00%
■ % Absent Nursing	3.69%	4.17%	0.79%	3.37%	14.83%	4.44%	2.85%	4.17%	4.17%	3.54%	5.89%	14.67%	3.27%	5.16%	8.24%	7.69%	5.31%	1.55%	3.96%	1.44%	3.90%	3.01%	5.91%	6.09%	3.04%	2.31%	5.11%	5.11%	1.43%	7.94%	7.22%	6.24%	5.54%	8.58%
■ % Absent Health & Social Care Professionals	2.44%	2.53%	3.62%	3.80%	5.19%	3.28%	5.98%	4.24%	4.24%	1.44%	3.26%	0.00%	5.39%	4.71%	2.78%	5.53%	4.33%	6.18%	5.96%	5.94%	6.48%	4.59%	7.12%	5.10%	3.29%	6.90%	5.37%	5.37%	8.72%	5.17%	2.14%	5.95%	7.46%	37.57%
■ % Absent Management Admin	1.34%	4.69%	3.71%	2.11%	0.56%	3.20%	0.26%	4.49%	4.49%	3.04%	0.00%	3.86%	0.75%	4.84%	6.61%	1.43%	0.42%	5.23%	1.57%	5.12%	0.36%	3.95%	3.71%	0.00%	3.69%	1.98%	6.87%	6.87%	11.41%	2.70%	2.49%	3.59%	10.06%	13.70%
■ % Absent General Support Staff	1.28%	1.73%	2.56%	3.83%	0.00%	4.92%	6.41%	3.54%	3.54%	10.08%	4.14%	6.40%	0.00%	2.65%	4.27%	2.34%	7.61%	0.36%	9.17%	5.26%	4.98%	2.69%	5.77%	0.00%	0.00%	3.91%	0.59%	0.59%	4.72%	2.42%	6.66%	10.13%	0.00%	13.53%
■ % Absent Other Patient & Client Care	1.86%	1.98%	3.31%	3.41%	2.86%	4.33%	4.37%	4.98%	4.98%	3.09%	4.05%	7.08%	2.16%	4.21%	4.42%	4.36%	4.79%	3.13%	4.57%	5.42%	5.97%	9.06%	4.54%	6.65%	10.18%	8.34%	6.09%	6.09%	4.97%	13.96%	6.88%	6.71%	6.86%	4.37%
■ % Absent	2.25%	2.69%	2.98%	3.46%	3.56%	3.77%	4.09%	4.14%	4.14%	4.20%	4.33%	4.36%	4.39%	4.39%	4.51%	4.58%	4.67%	4.67%	4.89%	4.95%	5.00%	5.22%	5.26%	5.39%	5.40%	5.52%	5.91%	5.91%	6.09%	6.14%	6.56%	6.56%	7.16%	8.31%